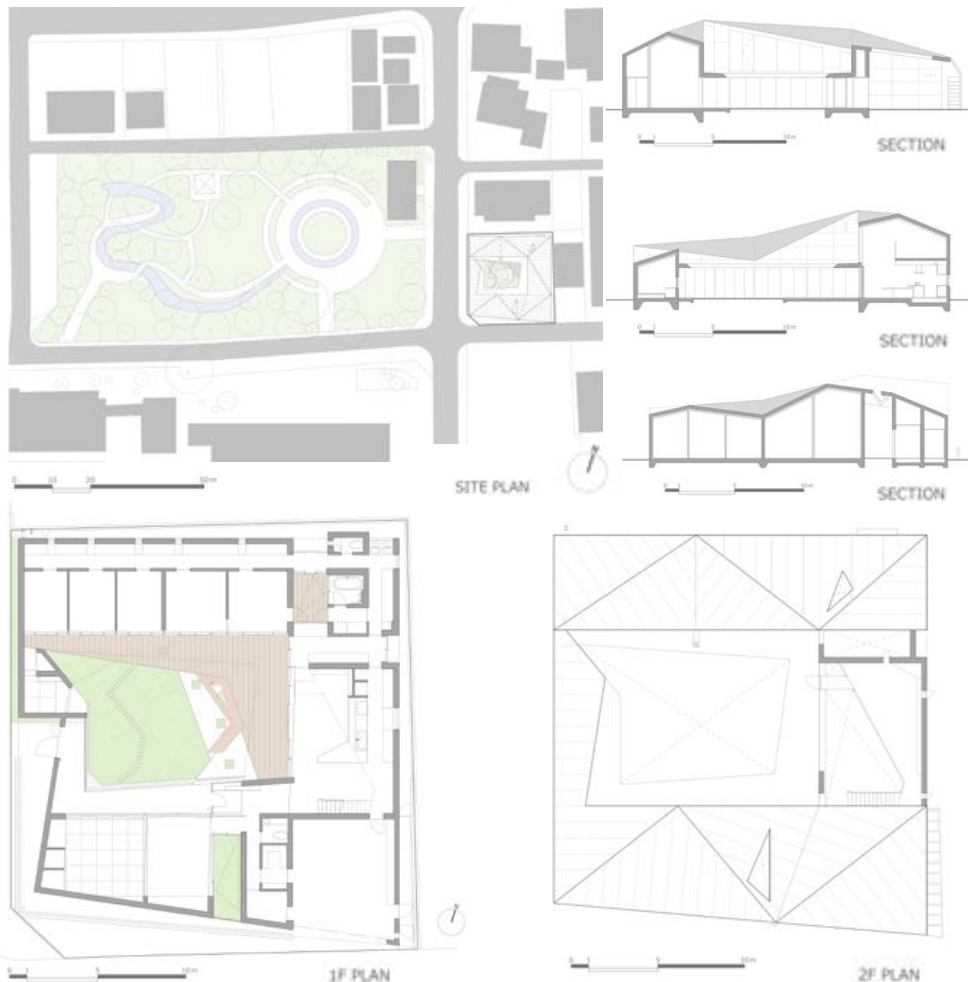




Dear Press

This time, we are releasing a new house with a total floor area 330m<sup>2</sup> 【R I D G E】 with the key concept of “Landscape woven by ridgelines”.  
JIA CHUGOKU Architecture Award Excellent Award 2019,  
Energia Housing Architecture Contest Best Excellence Award 2019



Design Concept

**R I D G E**

Landscape woven by ridgelines

It is a private house for a family of five in a local city. The site is located in the center of the local city, and the park and an art museum is located in the west front.

A house with one large fold roof and three courtyards was planned as an urban housing project that responds to the mountains and parks that stretch around the site.

Creation of a new I've seen this somewhere before landscape was created by a park and surrounding mountain ranges that overlap the ridgeline of the roof and the garden on the site.

Building Outline

Location	WEST JAPAN
Design Supervision	SARO FIRST CLASS ARCHITECT OFFICE
Construction	DAIWA CONSTRUCTION co.,Ltd
Construction	RC
Floor	2F
Maximum height	6. 0 9 m
Site area	5 4 8. 1 8 m <sup>2</sup>
Building area	3 3 0. 8 4 m <sup>2</sup>
Total floor area	3 2 6. 5 2 m <sup>2</sup>

Release Inquiries

PARA-DESIGNLAB co.,ltd  
SARO FIRST CLASS ARCHITECT OFFICE  
Public relations Moeka Ohtani  
ML parasaro@parasaro.com  
TL/FX +81 -92 -516 -2537  
WEB [https:// parasaro.com](https://parasaro.com)